

Torrington Public Schools

Smarter Balanced Field Test Training



March, 2014



Presentation Overview

- CMT/CAPT Science Test Administration
- Preparing for the Field Test
- Overview of Field Test Administration
- Performance Tasks
- Communicating with Students & Families
- Questions





CMT/CAPT Science Test Administration

CMT/CAPT Science

- Grades 5, 8, and 10
- Testing: Week of March 3, 2014
- Accommodations delivered via the Measurement Incorporated Secure Testing (MIST) System
 - MIST account usernames and passwords are available on the Measurement Incorporated Web Portal.
 - MIST Student Rosters are available on the MIST Proctor Site.
- ***Test irregularities must be immediately reported to your site coordinator***



CMT/CAPT Science

Test materials are posted on the Student Assessment page of the CSDE Web site:

www.ct.gov/sde/StudentAssessment

- 2014 CMT District Test Coordinator Manual
- 2014 CMT Test Examiner's Manual – Science Only
- 2014 CMT MIST Test Examiner's Manual
- CMT/CAPT Science-only Captivate training module
- 2014 CMT and CAPT District Test Coordinator Workshop PowerPoint



Preparing for the Smarter Balanced Field Test



The MOST Important Info...

- We are **FIELD** testing
 - **Item validity** is being tested rather than student ability
 - Mistakes will happen
 - Technology will hiccup
 - ***Have lessons ready in case you need to return to your class and stop testing***
- Remember to breathe – we will **ALL** get through this, statewide
- **HOWEVER** we still need to take this seriously



Test Administrator Prep

- Review the Test Administrator Script (provided)
 - Same script for EVERY test, EVERY grade
- Visit TPS website > Teacher Resources
 - Training modules for more information
 - Links to test administrator manual with full details
 - Reminders on Test Irregularities, Breaches, Expectations, etc.
 - Performance Task Examples
 - Student Training Test Link



Student Training Tests

- **Includes new item types not currently present in the practice test (matching tables, table fill in, evidence based selected response)**
- Familiarize students with the software and interface features on Smarter Balanced assessments.
- Assessments separated by grade band
 - 3-5
 - 6-8
 - HS
- Approximately 14-15 items per grade band (6 in ELA and 8-9 in math)
- No performance tasks
- Approximately 20 minutes per test



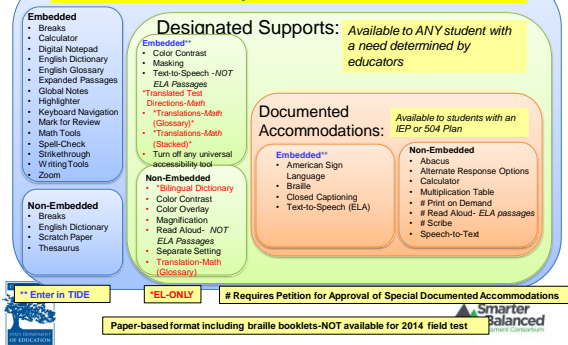
Available Embedded Universal Tools, Designated Supports, and Accommodations

Training and Field Tests

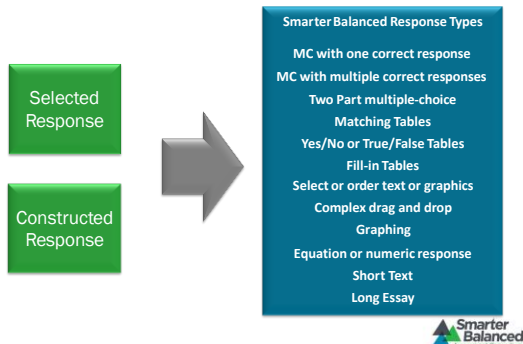
- **All universal tools**
- **All designated supports, including:**
 - Color contrast
 - Masking
 - Streamlining
 - Text-to-speech items
 - Translated test directions: Spanish
 - Translations (glossary): Spanish, Arabic, Cantonese, Filipino, Korean, Mandarin, Punjabi, Russian, Ukrainian, Vietnamese
 - English Glossary
 - Full Translation: Spanish
- **All accommodations, including:**
 - American Sign Language for all math items and ELA listening stimuli and items
 - Braille
 - Text-to-speech for reading passages in grades 6–high school



Universal Accessibility Tools: Available to ALL students



Response Types



Smarter Balanced Assessment

Computer Adaptive

- Assesses **the full range of Common Core** in English language arts and mathematics for students in grades 3–8 and 11 (interim assessments can be used in grades 9 and 10)
- Measures **current student achievement and growth across time**, showing progress toward college and career readiness
- Includes a **variety of response types**

Performance Tasks

- Extended tasks demonstrate real-world writing and analytical skills
- May include online research and group discussions
- Require 1-2 class periods to complete
- Included in both interim and summative assessments
- Applicable in all grades being assessed
- Evaluated by using consistent scoring rubrics



Overview of Field Test Administration



Testing Window

March 18 to June 6, 2014

Dates	Elementary Grade	Secondary Grade
March 18-April 4	5	8
April 7-May 3	4	7
May 5- May 30	3	6
May 19-June 6	N/A	11



Scheduling Test Sessions

Order of administration for each content area:

1) "Computer Adaptive" Test

- 2 days Math
- 2 days ELA/Literacy

2) Classroom Activity – 1 day

3) Performance Task

- ELA/Literacy = 2 days
 - Part 1 – Research
 - Part 2 – Full write
- Math = 1 day



Summative Assessments APPROXIMATE Testing Times

Content Area	Grades	Computer Required			In-Class Activity	Total
		CAT	PT Only	Total		
English language arts/Literacy	3-5	1:30	2:00	3:30	0:30	4:00
	6-8	1:30	2:00	3:30	0:30	4:00
	11	2:00	2:00	4:00	0:30	4:30
Mathematics	3-5	1:30	1:00	2:30	0:30	3:00
	6-8	2:00	1:00	3:00	0:30	3:30
	11	2:00	1:30	3:30	0:30	4:00
Combined	3-5	3:00	3:00	6:00	1:00	7:00
	6-8	3:30	3:00	6:30	1:00	7:30
	11	4:00	3:30	7:30	1:00	8:30

The test duration estimates described above are applicable to most students. However, Smarter Balanced assessments are not timed tests. Some students may need more time while others may need less time to complete the assessment.



Breaks for Students

Breaks can be provided during the test session.

- Use **PAUSE** feature in testing software
- Break should be **no more than 10 minutes**
 - After 20 minutes, the student won't be able to go back to items on previous screens



ELA Timing and Sequencing

	Non-Performance Task Questions	Classroom Activity	Performance Task (PT)
Number and Duration of Sessions	Recommendations: <ul style="list-style-type: none">No fewer than two sessions (recommended) and no more than six sessions (rare/scheme)Session durations range from 40 to 60 minutes	Recommendations: <ul style="list-style-type: none">Administer in one sessionApproximate session duration 15 - 30 minutesShould occur one to three days prior to PTShould NOT occur on the same day as the ELA performance task	The performance task is presented in two parts. Recommendations: <ul style="list-style-type: none">Administer in two sessions corresponding to parts one and two of the PTSession durations range from 60 to 120 minutes
Breaks within Sessions	Breaks can be provided during the testing sessions using the software's pause feature. If the test is paused for more than 20 minutes, the student will not be able to go back to items on the previous screens.	NA	The performance task is presented in two parts. Students can take breaks within parts one and two; however, once a student moves to part two, he/she will not be able to review or revise items to part one. <ul style="list-style-type: none">Recommendation: Students complete part one in one testing session and part two the next school day.
Total Duration	Once a student has started the non-PT questions, they will be available for 45 days. <ul style="list-style-type: none">Recommendation: Student completes this portion within five days of starting.	NA	Once a student has started the PT, it will be available for 10 days. <ul style="list-style-type: none">Recommendation: Student completes each part of the PT within one day
Additional Required Resources	Headphones are required for the listening portion of the ELA assessment	NA	Headphones are required for some performance tasks



Slide 19

Math Timing and Sequencing

	Non-Performance Task Questions	Classroom Activity	Performance Task (PT)
Number and Duration of Sessions	Recommendations: <ul style="list-style-type: none">Administered in two sessionsSession durations range from 40 to 60 minutes <p>Most students will complete the non-PT questions in two sessions of 60 minutes or less or one long session of more than 60 minutes.</p>	Recommendations: <ul style="list-style-type: none">Administered in one sessionApproximate session duration 15 - 30 minutesShould occur as close to the PT as is feasible, and no more than three days prior to the PTMAY occur on the same day as the PT	Recommendations: <ul style="list-style-type: none">Administered in one sessionSession duration ranges from 40 to 120 minutes
Breaks within Sessions	Breaks can be provided during the testing sessions using the software's pause feature. If the test is paused for more than 20 minutes, the student will not be able to go back to items on the previous screens.	NA	Students can take breaks during PT testing sessions. Math PT items are presented on a single screen. Following a break, the student will have access to the same items.
Total Duration	Once a student has started the non-PT questions, they will be available for 45 days. <ul style="list-style-type: none">Recommendation: Student completes this portion within five days of starting it.	NA	Once a student has started the PT, it will be available for 10 days. <ul style="list-style-type: none">Recommendation: Student completes the PT in one day



Slide 20

Performance Tasks



Performance Tasks

- In both ELA and Math
- Include a Classroom Activity
- Examples provided on handouts



Smarter
Balanced
Assessment Consortium

Classroom Activity

- Recommended to be administered no more than 3 days before the PT
 - Should be done the day before, especially in grades 3-5
- Approximately 30 minutes
- Administered in a classroom setting
- Script will be provided to test administrators

Smarter
Balanced
Assessment Consortium

ELA Performance Task

- **Classroom Activity:** A teacher-led activity using Smarter Balanced scripted material and sources
- **Part 1:** On a computer, students read and respond to three evidenced-based research questions
- **Part 2:** On a computer, students will develop a full-write response using the same source material in Part 1

Smarter
Balanced
Assessment Consortium

ELA Performance Task



IMPORTANT NOTE:

- Any notes taken during Part 1 of the Performance Task should be taken on the **DIGITAL NOTEPAD**.
- Notes that are done with paper and pencil in the Classroom Activity or in Part 1 must be destroyed and will NOT carry over to Part 2**
- Only the notes on the DIGITAL NOTEPAD carry over from Part 1 to Part 2.



ELA Performance Task Scoring

- 3 Research Questions**
 - two constructed response items
 - 2-point items
 - hand scored using item specific rubrics
 - one matching table item
 - 1-point
- Full-Write**
 - Analytic scoring
 - Organization/Purpose – 4-point rubric (1-4)
 - Evidence/Elaboration – 4-point rubric (1-4)
 - Conventions – 3-point rubric (0-2)**



Math Performance Tasks

- Integrate knowledge and skills across multiple Claims and Targets.
- Measure capacities such as depth of understanding, research skills, and/or complex analysis with relevant evidence.
- Require student-initiated planning, management of information/data and ideas, and/or interaction with other materials.
- Reflect a real-world task and/or scenario-based problem.
- Allow for multiple approaches.



Mathematics Claims for Performance Tasks

Claim #1 - Concepts & Procedures	"Students can explain and apply mathematical concepts and interpret and carry out mathematical procedures with precision and fluency."
Claim #2 - Problem Solving	"Students can solve a range of complex well-posed problems in pure and applied mathematics, making productive use of knowledge and problem solving strategies."
Claim #3 - Communicating Reasoning	"Students can clearly and precisely construct viable arguments to support their own reasoning and to critique the reasoning of others."
Claim #4 - Modeling and Data Analysis	"Students can analyze complex, real-world scenarios and can construct and use mathematical models to interpret and solve problems."
Overall Claim for Grades 3-8	"Students can demonstrate progress toward college and career readiness in mathematics."
Overall Claim for Grade 11	"Students can demonstrate college and career readiness in mathematics."



Improprieties, Irregularities, and Breaches



Test Security

- The Field Tests are secure. All test items and test materials are secure and must be appropriately handled.
- Teachers and administrators will NOT have access to test items. **The same professional practices expected on all state assessments are expected here and consequences can be administered for violations.**



Test Security Chart

Impropriety	Irregularity	Breach
<ul style="list-style-type: none"> Unusual circumstance that has a low impact on the individual or group of students who are testing Low risk of potentially affecting student performance on the test, test security, or test validity Can be corrected and contained at the local level Report to site coordinator immediately 	<ul style="list-style-type: none"> Unusual circumstance that impacts an individual or group of students who are testing May potentially affect student performance on the test, test security or test validity Report to site coordinator immediately 	<ul style="list-style-type: none"> Event that poses a threat to the validity of the test Examples may include such situations as a release of secure materials. Breaches MUST BE reported to site coordinator immediately



Communicating with Students and Families



Relieving Stress

- Remind students that the test is a **FIELD TEST**
 - They are **“test driving”** the test
- Questions asked to find out HOW they can find answers in the materials they are given NOT what they already KNOW about the topic



Test Arrangement

- **Three parts each** for ELA/Literacy and Math
 1. "Computer Adaptive" Test
 2. Class Activity
 3. Performance Task (on computer)



Info for Families

- Letters will go home to families from the school principal (English & Spanish)
- Informational module will be posted on TPS website for families to view including other links to Smarter Balanced test information



Smarter Balanced Web Site



www.SmarterBalanced.org



Questions



If you have questions after today, contact your site coordinator. They will contact the district coordinators.